

Sponsored by:

*National
Gypsum*

 Material
Bank

mM EDUCATION SESSION #1

Driving Transparency in Building Materials: How Interior Finishes Have Led the Way

Moderator



Gordon Boggis
Carnegie Fabrics



Elizabeth Baxter
HOK

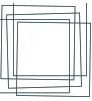


Avi Rajagopal
Metropolis



Laurel Chądzyński
mindful MATERIALS

Developing the Common Materials Framework (CMF)



5 Buckets | 18 Sub-Buckets



**Human
Health**

Substances

VOCs

Company Human
Health Impacts



**Climate
Health**

Embodied Carbon

Company Carbon



**Ecosystem
Health**

Pollution

Product Water
Footprint

Company Water
Footprint

Biodiversity +
Conservation

Life Cycle Env. Impacts



**Social Health
& Equity**

Company
Workspace

Supply Chain

Community



**Circular
Economy**

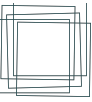
Sourcing

End-of-Life

Packaging

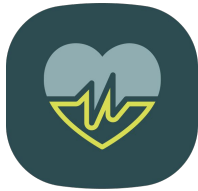
Waste

Company Circularity



Materials Disclosures: The T.A.C.O. Spectrum

Transparency | Assessment | Commitments | Optimization



Human Health



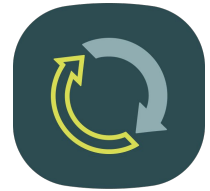
Climate Health



Ecosystem Health



Social Health & Equity



Circular Economy

TRANSPARENCY

identifying and disclosing impacts

ASSESSMENT

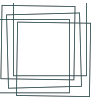
leveraging data to identify opportunities for improvement

COMMITMENT

turning those opportunities into meaningful plans or improvements

OPTIMIZATION

demonstrating achievement of an existing benchmark

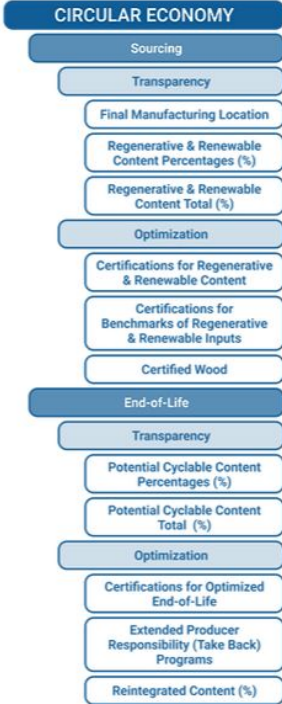


Impact Category
5/5 shown
Sub-Impact Category
10/18 shown
Is the ecolabel/standard
providing Transparency,
Assessment, Commitment
and/or Optimization?

Factor = The 'question'
to drive the Metric
51/~650 shown

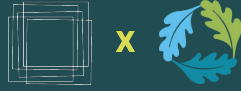
Metric* = the data
point(s), how to answer
the Factor "question"

*Metrics not shown
~1000 total





Q+A



Thank you!

Thank you to our Education Session
sponsors:

National 
Gypsum®

 **Material
Bank**®